

Historic Houses Association of Australia

Nindooinbah, S.E. Queensland

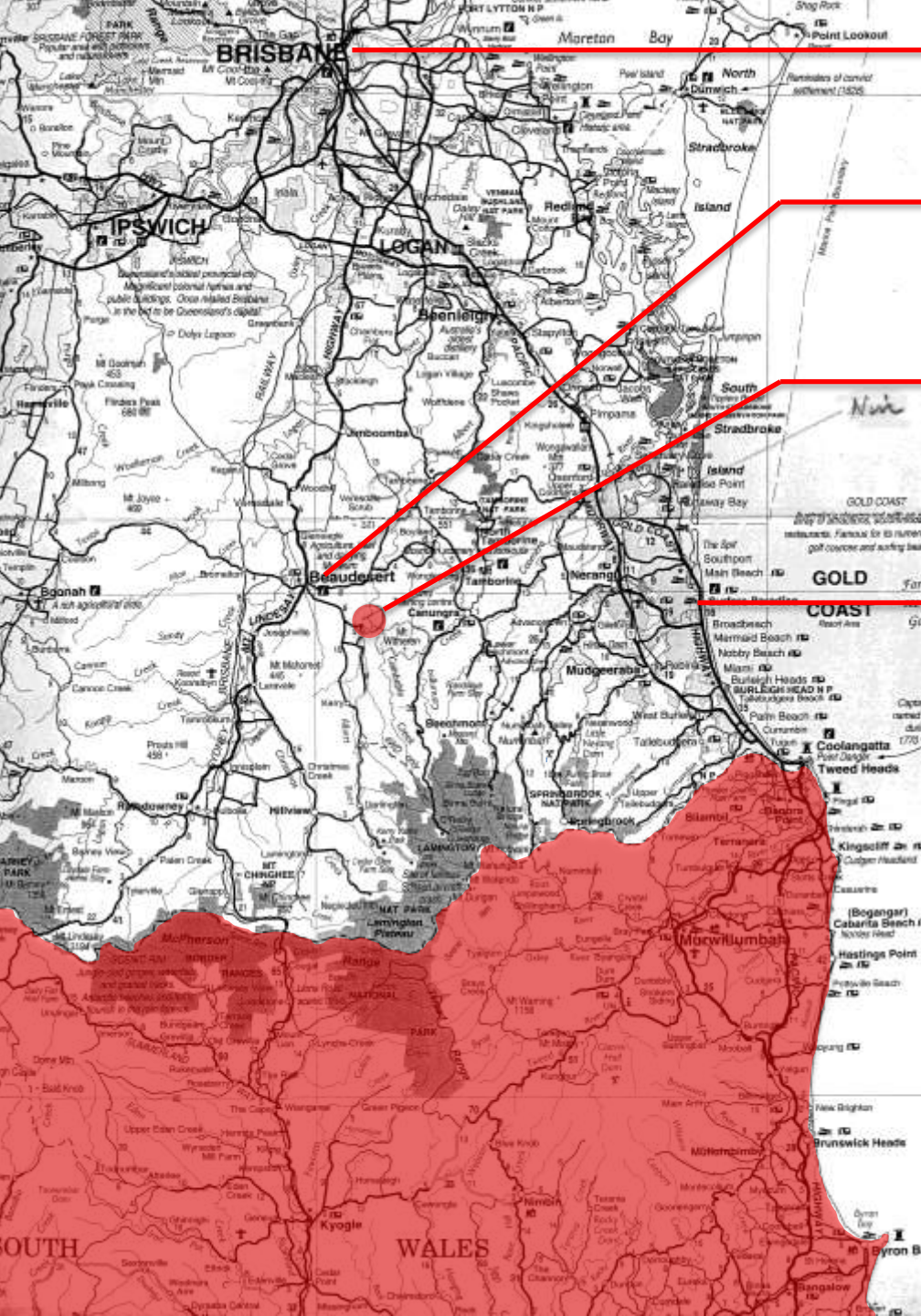
~~A case study~~ in change of ownership and
Proctor Risaton



**PRIVATE
PROPERTY**
SECURITY CAMERA
IN USE



The turn-off Nindoinbah House Road



Brisbane

Beaudesert

NINDOOINBAH

Surfers Paradise



Looking over the lagoon to the south-east



Nindooinbah, the entrance front

Photograph by Wes Stacey, published in Philip Cox, *The Australian Homestead* (1972)



The pergola



The piazza (morning room)

Photograph by Wes Stacey, published in Philip Cox, *The Australian Homestead* (1972)

AM HUTTON

T

moon in
to their

s of the
the rea-
ods-de-
apanese
ard the

ow very
e," said
re prob-



FRESH from the garden . . . Margaret with some cut lillies
on the sweeping lawns of Nindooinbah House.

Margaret Persse
Courier-Mail (October 1991)



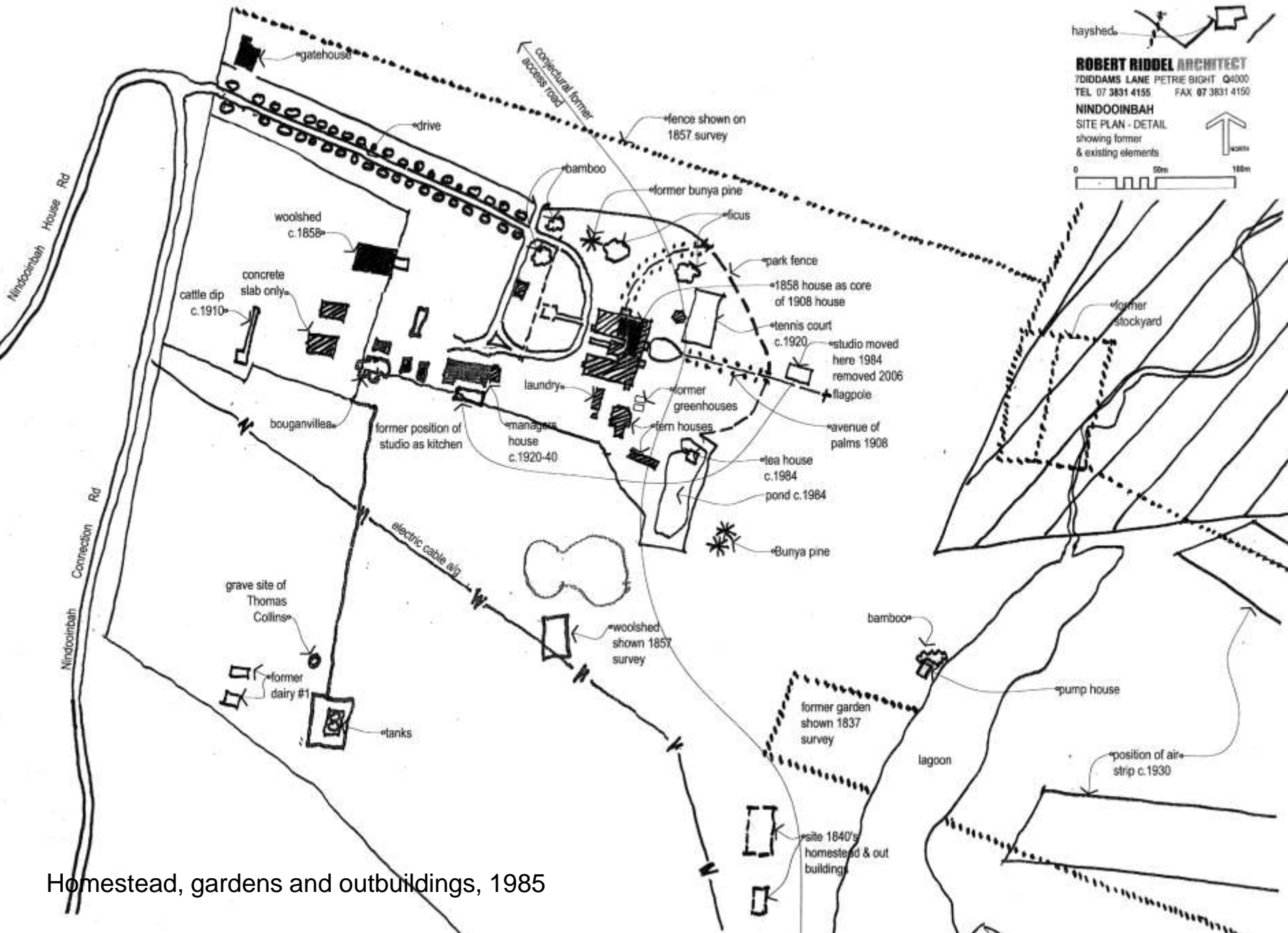
The entrance front
Photograph by the author, 2005



Patrick Hockey, undated portrait



Patrick Hockey, Dave Allen (Irish comedian), and Margaret Persse, 1985
Published in Sandra McGrath, *David Hockey* (1994)



hayshed

ROBERT RIDDEL ARCHITECT
 7DIDDAMS LANE PETRIE BIGHT Q4000
 TEL 07 3831 4155 FAX 07 3831 4150

NINDOOINBAH
 SITE PLAN - DETAIL
 showing former
 & existing elements

0 50m 100m

North

Homestead, gardens and outbuildings, 1985



Nindooindah, the dining room, Hall and Dods, 1906



Sideboard, Hall and Dods, 1906



Nindooibah, the dining room, chimney piece, Hall and Dods, 1906



The Chinese tea house, circa 1984



The garden front,
Photograph by the author, 1985



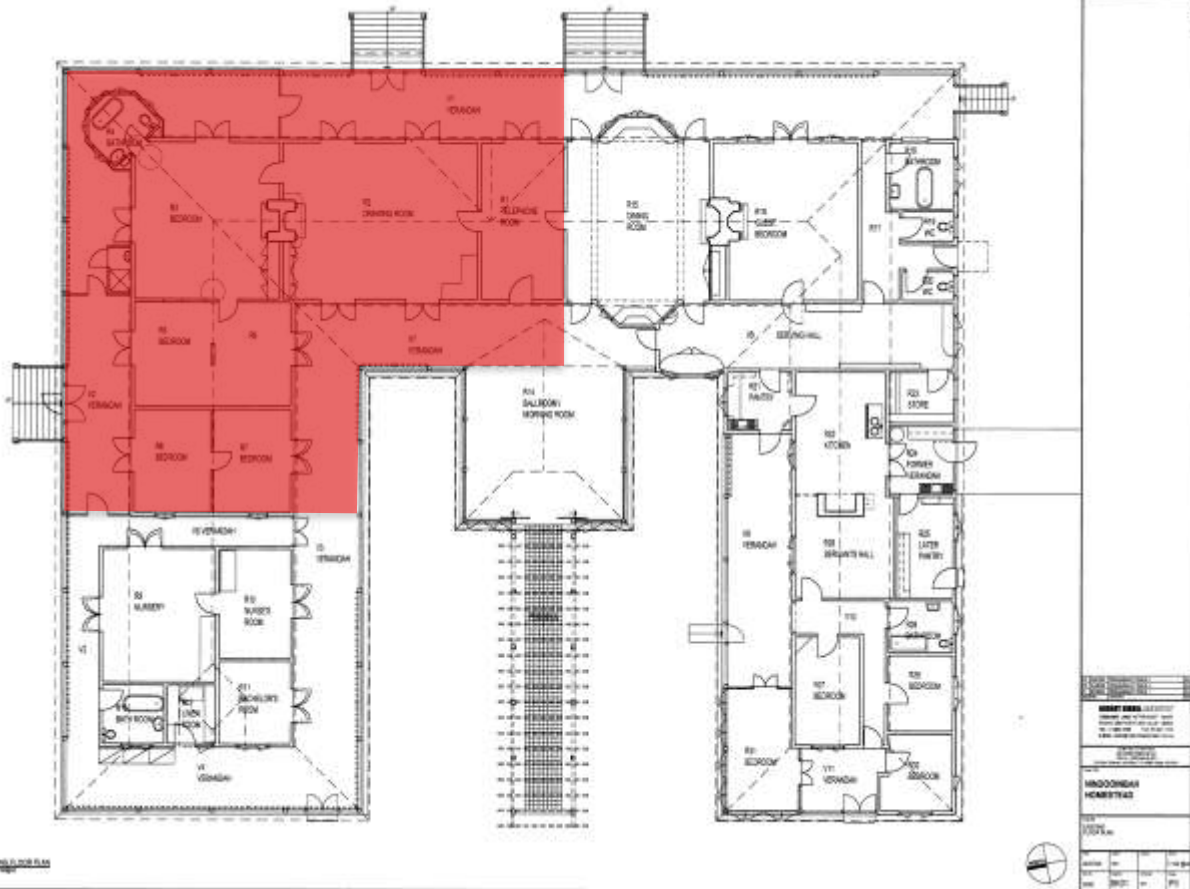
North-east corner of the 1858 homestead
Photograph William Boag, 1872



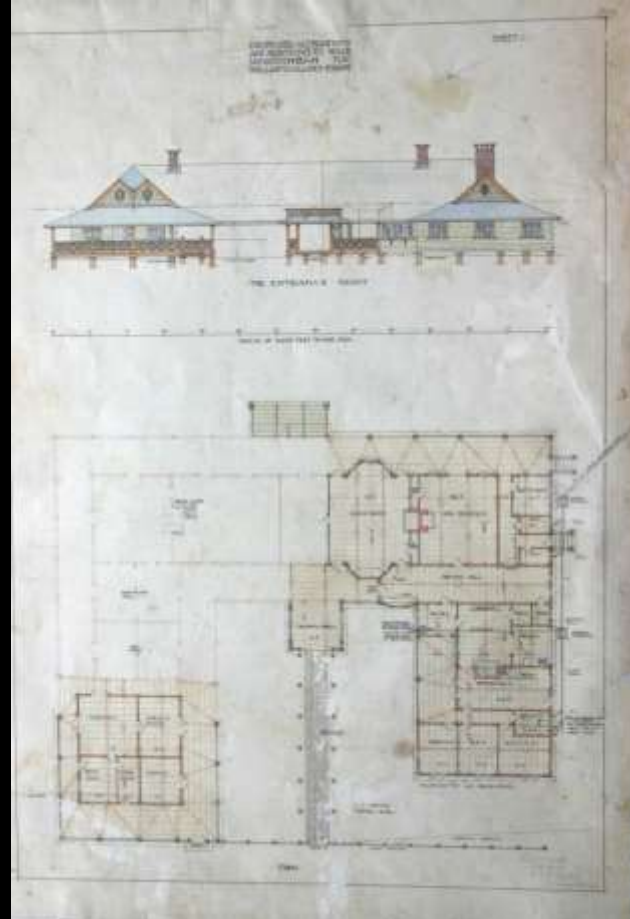
Nindoinbah in 1872 photo William Boag



Racehorse bred on the property by Ernest White c1875



Measured floor plan 2005



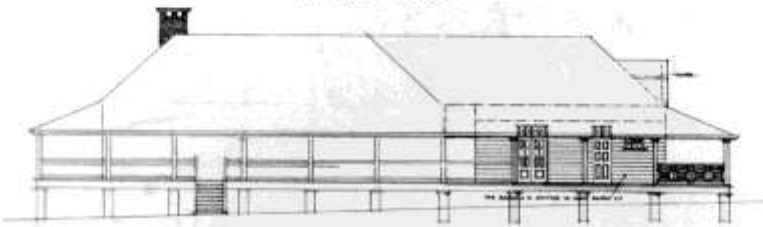
Hall and Dods floor plan 1906



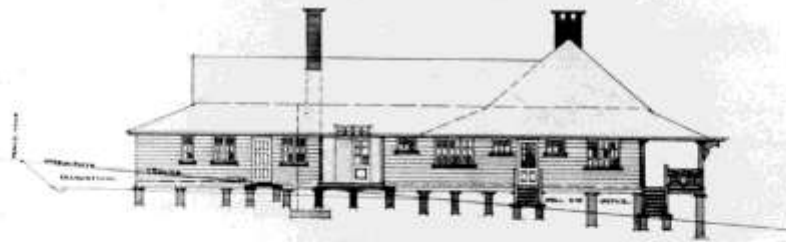
The enlarged homestead, circa 1909



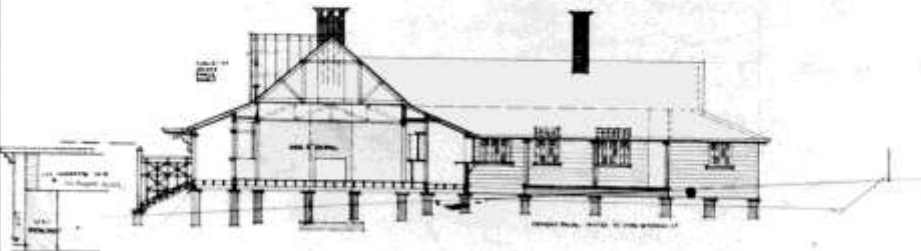
THE GARDEN FRONT.



THE NURSERY FRONT.



THE KITCHEN FRONT.



CROSS SECTION THROUGH THE DINING ROOM.

Handwritten notes and signatures in the bottom right corner of the drawing.



Manager's house built c 1910



John Collins as manager and aviator c1935



Nindooinbah airstrip c1940



Home of Australia's Ultrablack
and Next Generation Brangus

Outstanding Genetics Breeding Program

A middle-aged man with a balding head is seated at a wooden table in a well-lit room. He is wearing a white long-sleeved button-down shirt with a logo on the left chest that reads 'N NINDOOINBAH'. He is looking directly at the camera with a neutral expression. His hands are resting on a black clipboard on the table. To his right, there is a white ceramic mug and a closed silver laptop. The background features a wooden wall with a window and some indoor plants.

Euan Murdoch
Owner - 'Nindooinbah', QLD



Dam 2010



Water tanks 2010



New administration building 2010



Machinery shed 2010



Hay shed 2010



Woolshed and new fencing



N NINDOOINBAH
For Entry Please Contact:
Nick Cameron (Manager) 0409 348 491
Nat McGhee 0428 448 280
Euan Murdoch 0419 373 724
**AUTOMATIC GATES
DO NOT PARK IN GATEWAY**

Electric gates



Cattle sales yard



Manager,s house relocated as gardner's accomodation 2010



Homestead park gates



Original kitchen with AGA range 2005



New kitchen 2010



Dods balustrade 1906



Reconstructed balustrade 2010



Original pergola



Reconstructed pergola 2010



Garden 2005



Garden 2010



Nindooibah 2018

